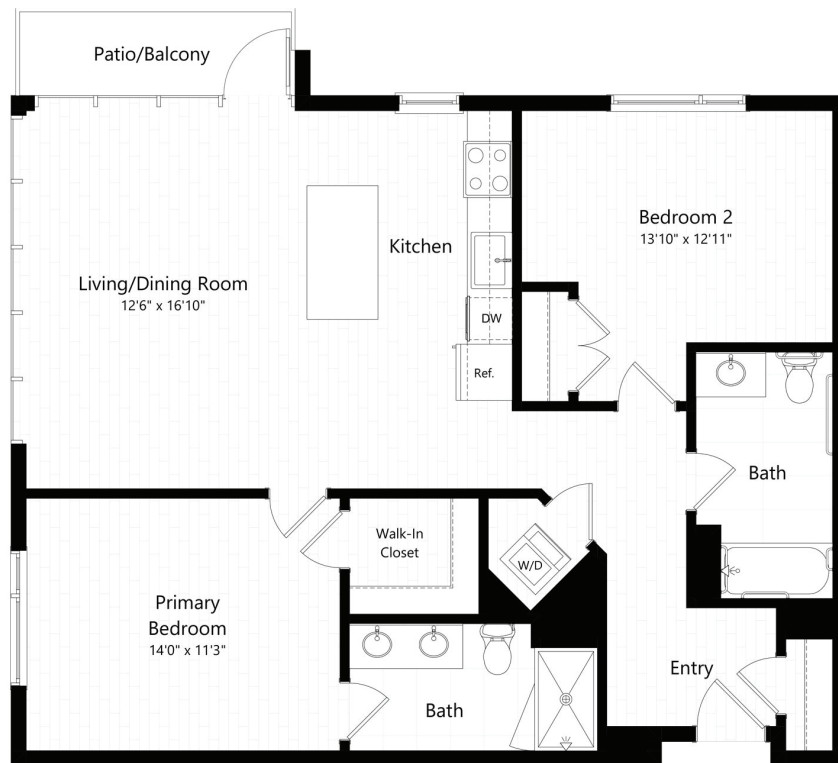


B5.1

2 BED / 2 BATH

1092

SQ. FT.



500 PARQ

500 Parq Lane | Parsippany, NJ 07054

www.500parq.com

Floor plans are artist's rendering. All dimensions are approximate. Actual product and specifications may vary in dimension or detail. Not all features are available in every rental home. Prices and availability are subject to change. Rent is based on monthly frequency. Additional fees may apply, such as but not limited to package delivery, trash, water, amenities, etc. Deposits vary. Please see a representative for details.